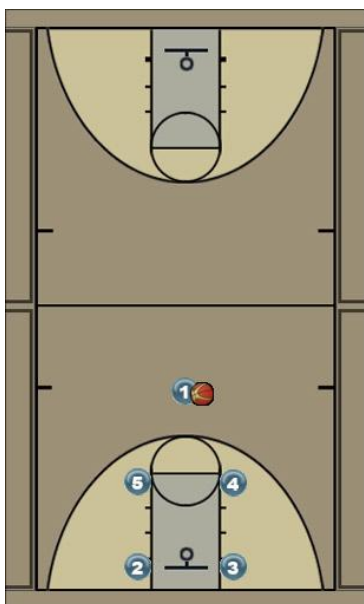
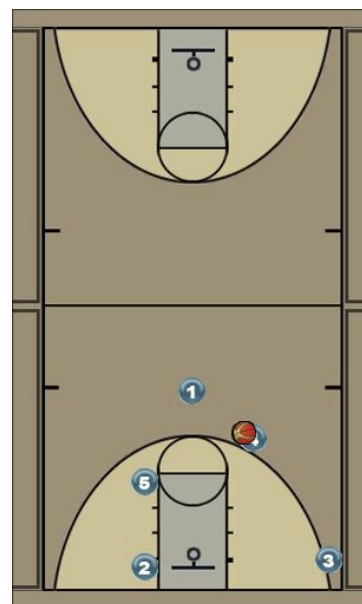


Mempis

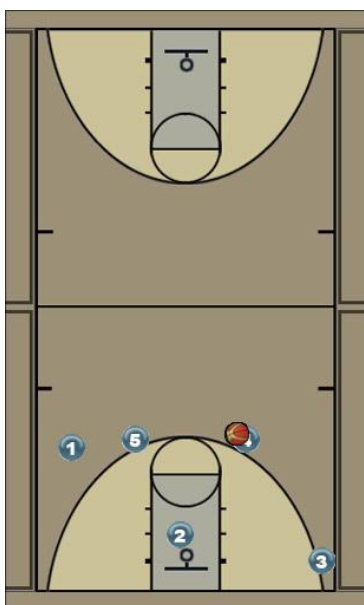
Initial Set



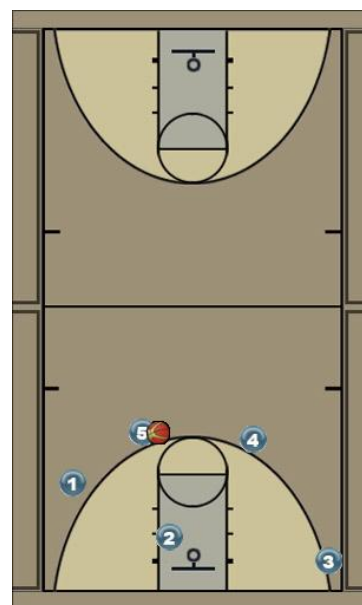
Movement 1



Movement 2



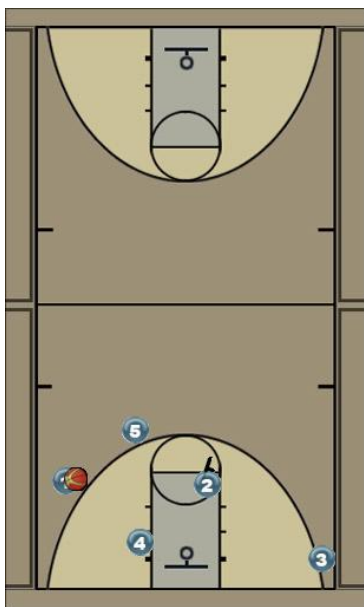
Movement 3



2 shows hard on flash post up 4 looks at 2 for a quick hit on post up. 5 slides up to 3 pt line 1 fades to right wing

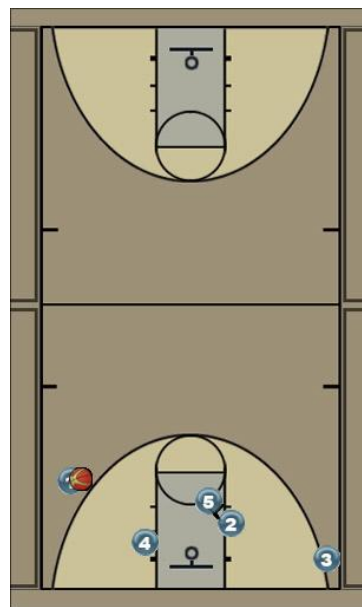
2 gets out of lane back to rt. block 4 passes to 5 1 slides down a bit (for spacing) 2 can seal post for quick entry from 5

Movement 4



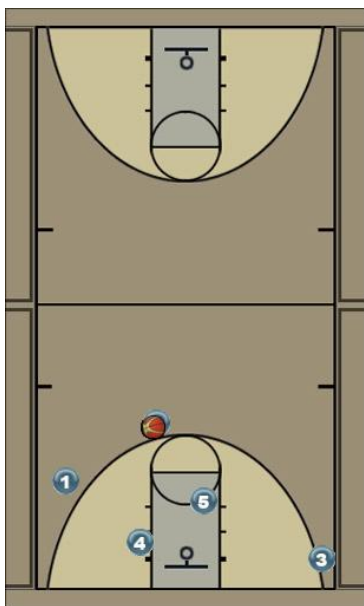
5 passes to 1. 2 goes and back screens 4 for "Shuffle cut" 1 looks for 4 on hard cut to hoop.

Movement 5



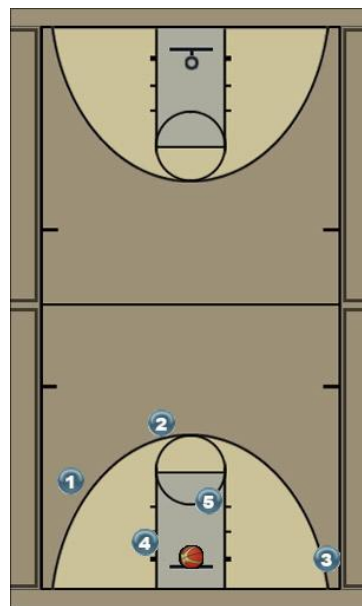
2 slides down lane (quickly). 5 goes and picks for 2 on pop. side of lane.

Movement 6



2 pops off of screen for quick hit 3 pt. shot.

Movement 7



2 cans "3"