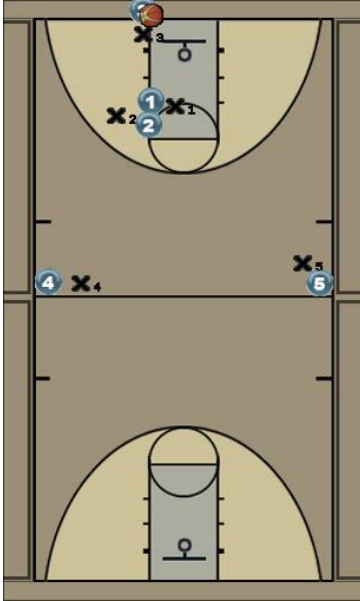


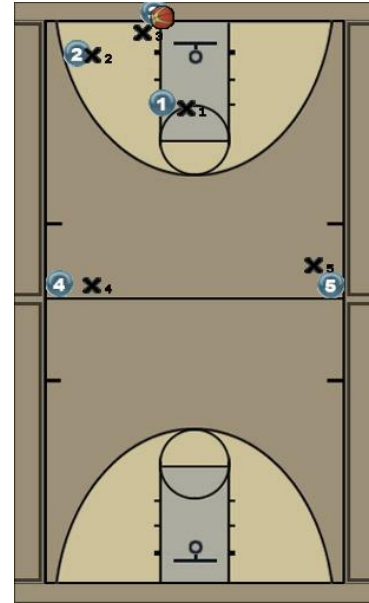
Press Break

Initial Set



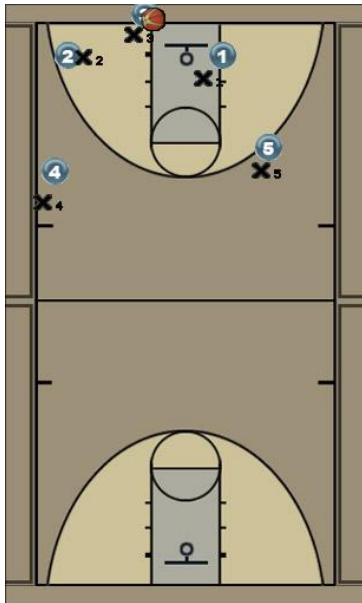
Play starts when the inbounder slaps the ball. 2 is the furthest guard from the ball, he makes a hard cut looking for the ball.

Guard cuts



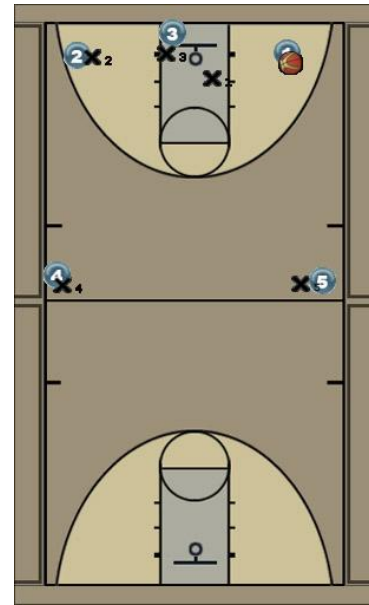
Once 2 has cut, the inbounder can read the defense and look to give it to the away hand of the other guard.

Other guard cuts



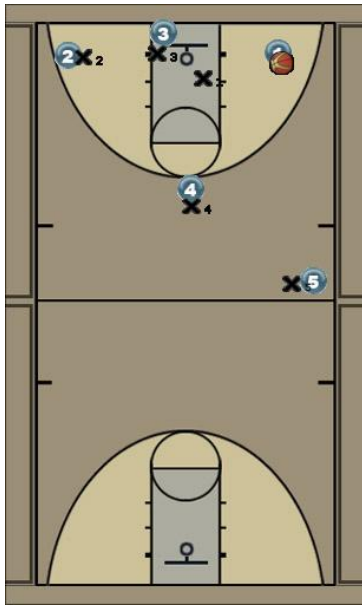
Other guard can cut if need be and the posts can cut back to the ball as a safety.

Inbound



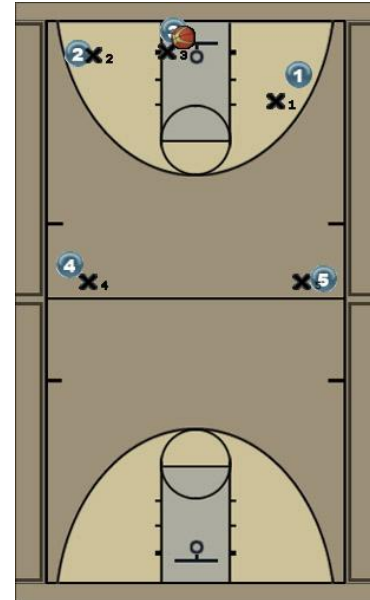
Once the ball is inbound, the inbounder steps in as a trailer. The trailer always hangs back as a safety in case the guards need to reverse the ball.

Opposite post cuts back

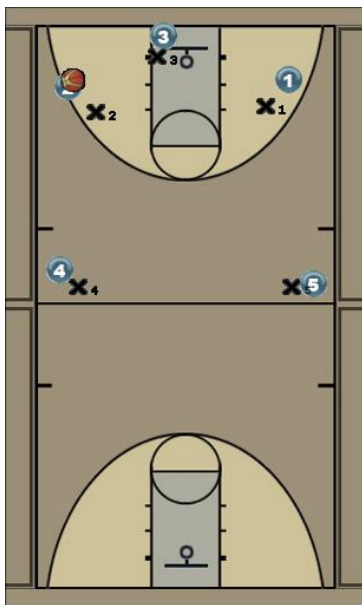


Depending on what side the ball is on, the opposite post cuts to the middle, looking for the ball.

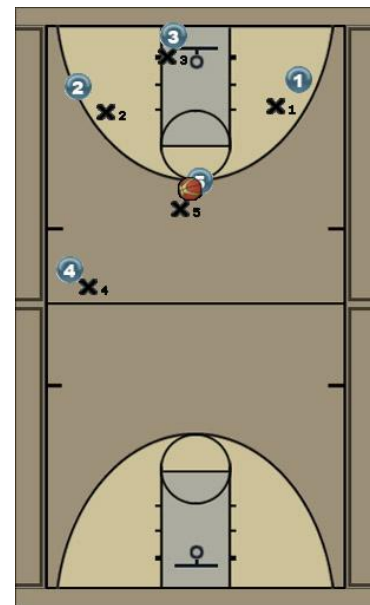
Reversal



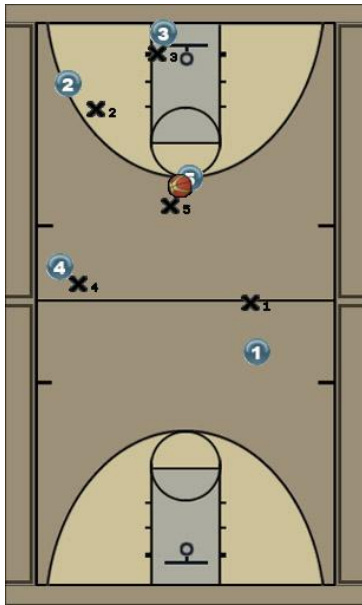
Reversal



Opposite post cuts and gets it

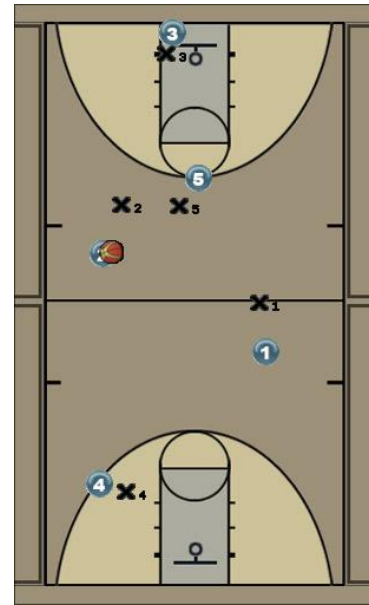


Guard cuts



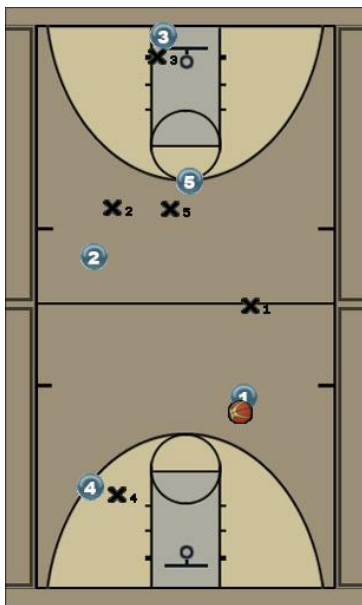
Once the ball is in the middle, the guard from the posts original side cuts down the sideline looking for the ball

Cuts



From here, cutters stream past the post looking for the ball and the fast break

Push the ball



Push the ball

