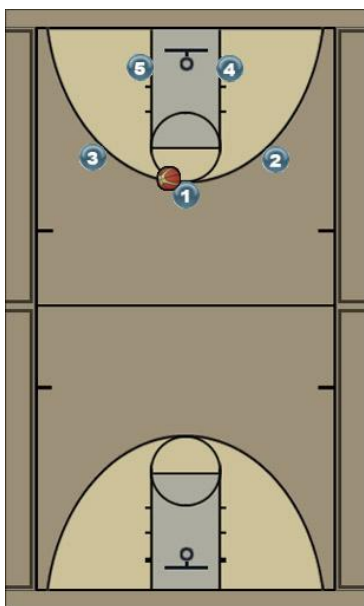


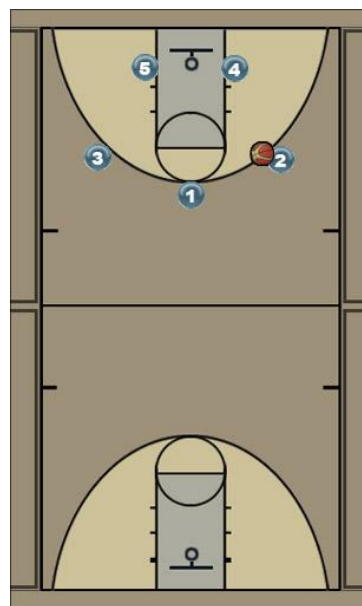
Rebel

Initial Set



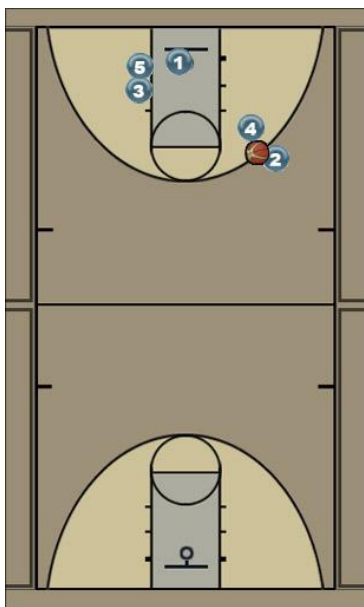
This is the initial set - 1-2-2

ball to wing



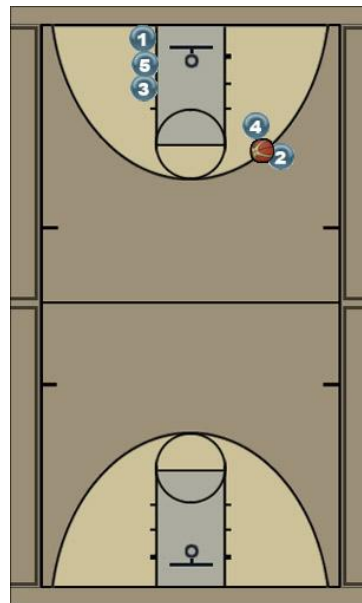
Point guard passes to a wing

cuts 1

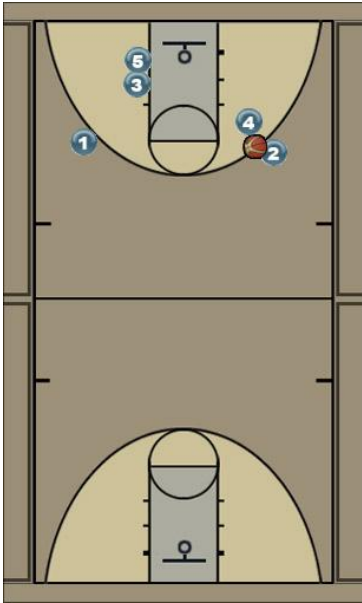


Weak side wing sets a double screen with weak side post. Point guard cuts down the middle and out to the weak side. Strong side post sets a high screen for the ball handler.

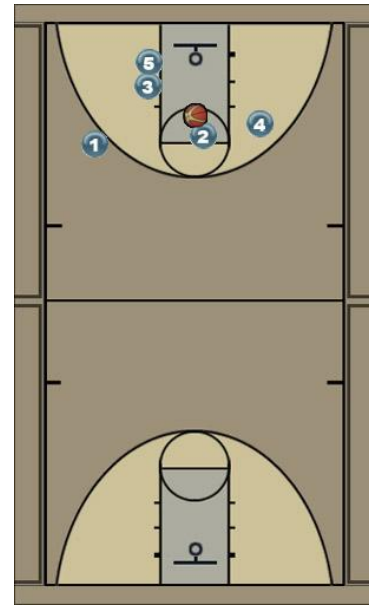
cuts 2



cuts 3

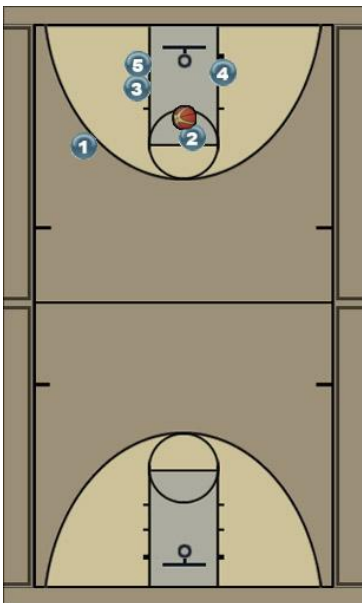


drive

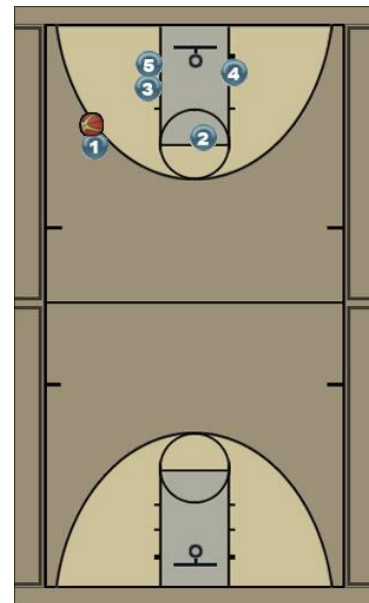


Ball handler drives to the middle. She has 3 options: 1.) shoot, 2.) dish to screener, 3.) dish to weak side

roll

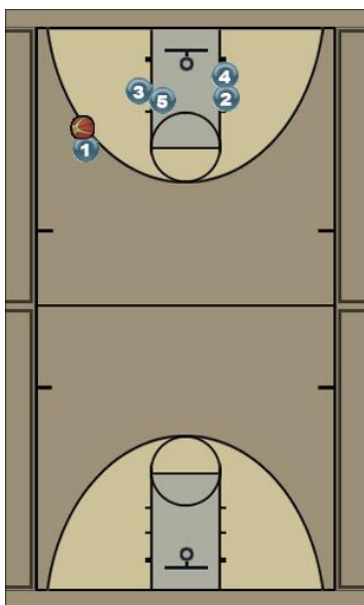


kick out

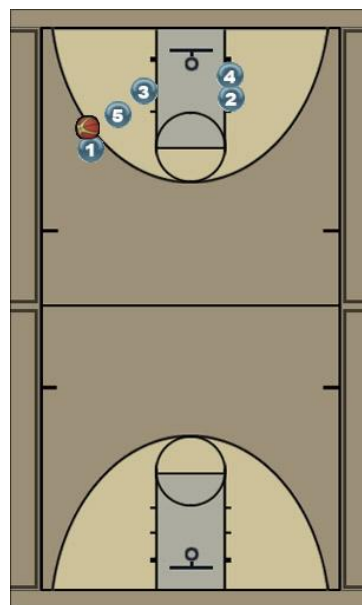


If she kicks it to the weak side, option 1 here is to shoot. Otherwise, we set up the offense from that side.

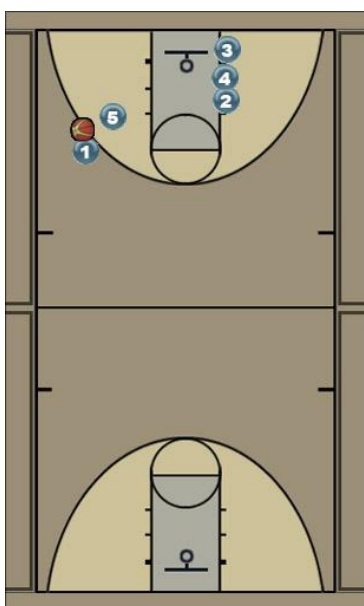
reset



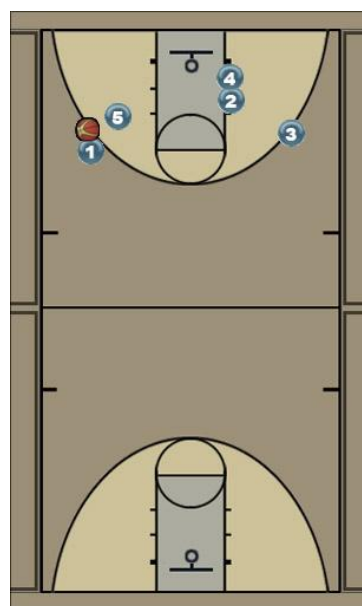
reset 2



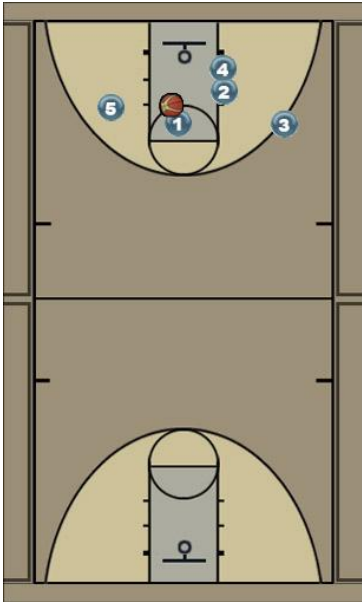
reset 3



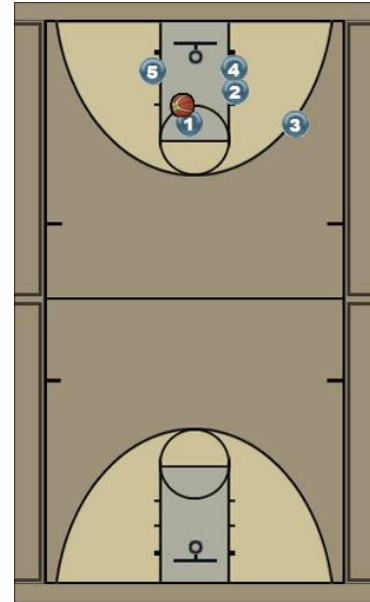
reset 4



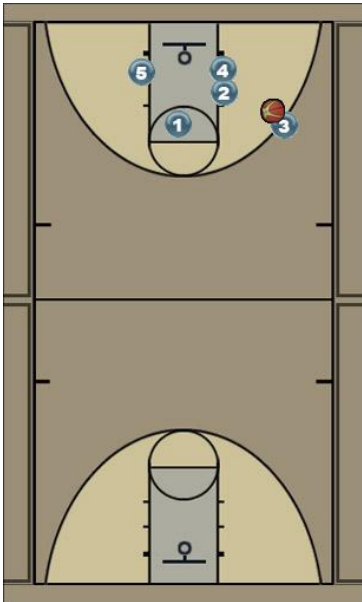
drive



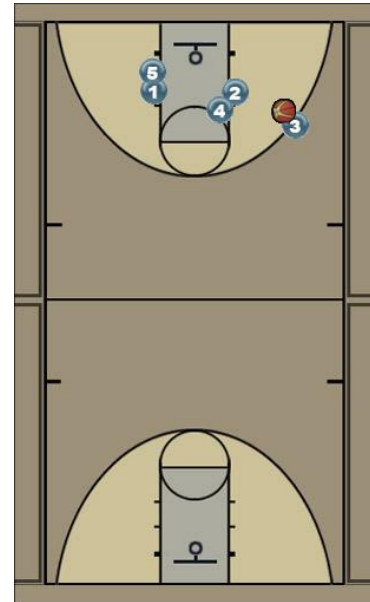
roll



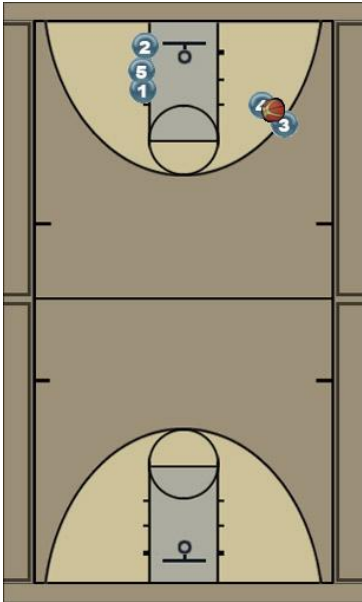
kick out



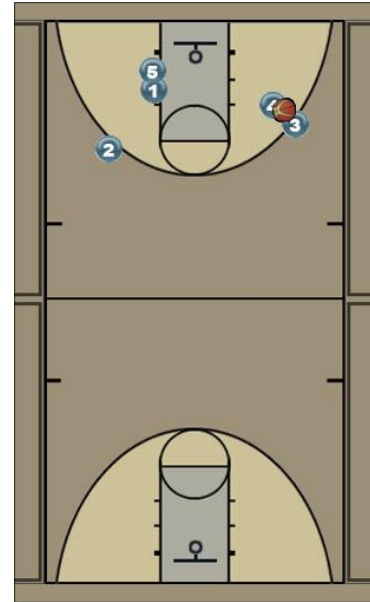
reset



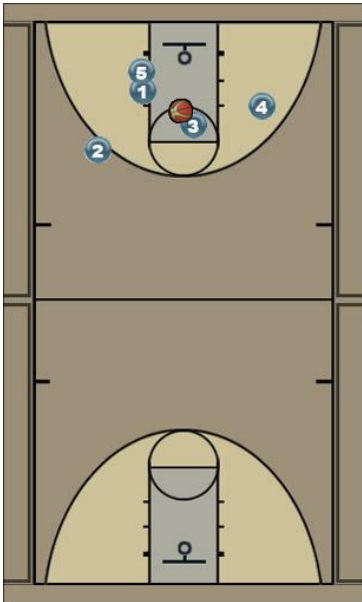
reset 2



reset 3



drive



roll

