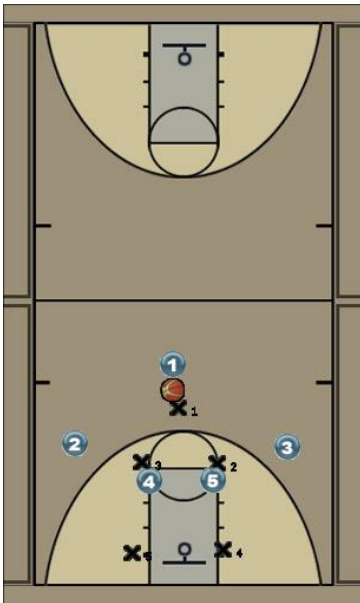
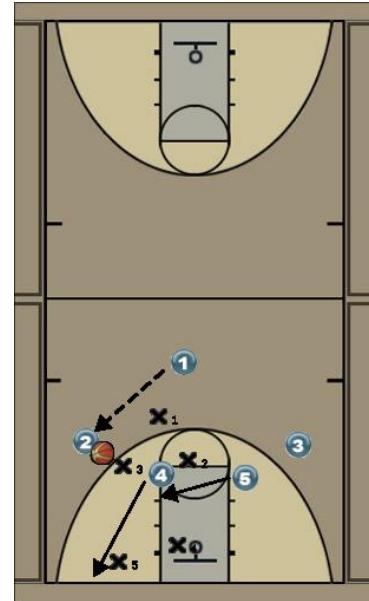


## Spin for Shot

### Initial Set

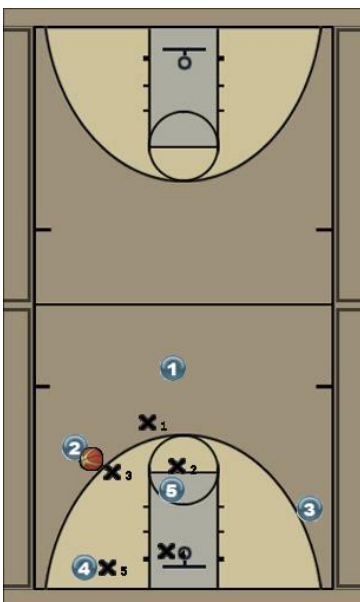


### Spin - Pass to the Wing

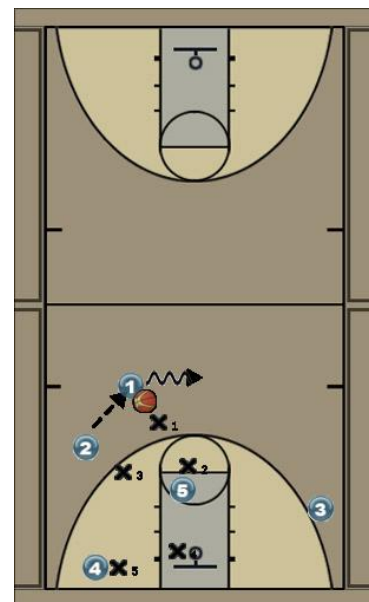


(1) passes to (2), (4) dives to the short corner looking for the ball, (5) flashes to the high post

### Defense Shifts

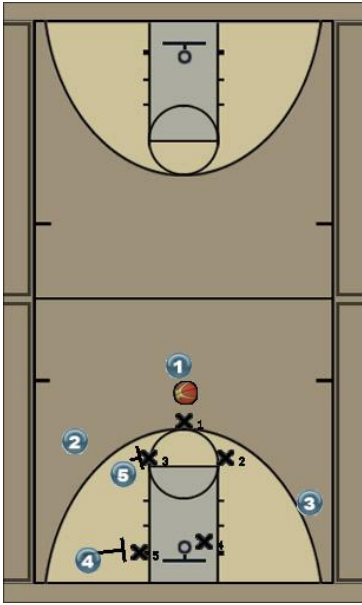


### Drag



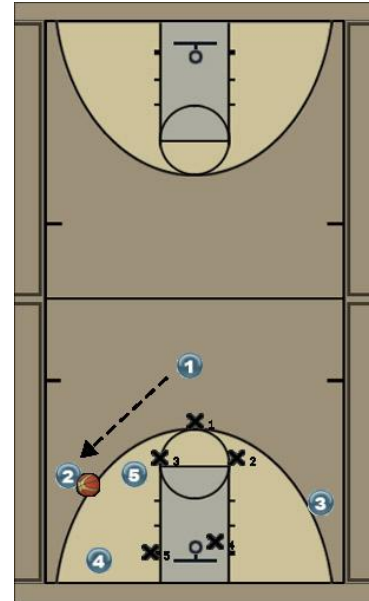
(2) passes back to (1), (1) drag back to middle

## Defense shift / (5) /(4) screen



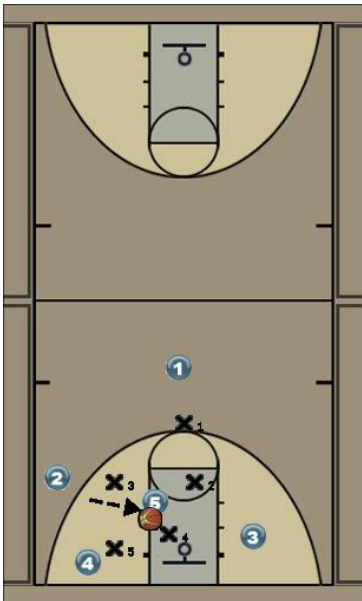
Once the defense shift , (5) and (4) step out and Screen the outside of guys

## Shot



(2) shade to the corner for the shot

## Options



if (2) has no shot , (5) should open in the gap, for shot or pass down to (4) if baseline defender commit, or opposite to (3) for ally