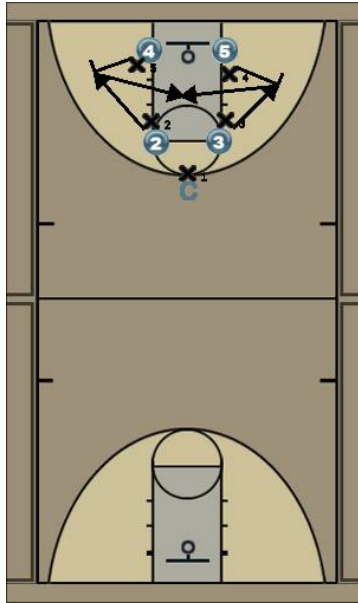


## "Wings of Arc" of 1969

### Initial Set



"Wings and Arc" Boston Celtics 1969 1 has the ball being held up by man 1 Def, 2 Cuts down gets picked off by the 4 to Cut to the middle, 3 Cuts down gets picked off by the 2 to Cut to the Middle, Looking for the pass to either 3 or 2 in the Middle.