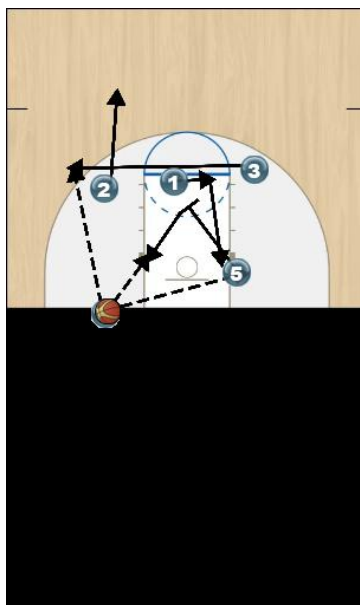


Thunder

Initial Set



The 5 will set a screen for 1 and the 1 will set a flare screen which is a quick fake screen and cut to the basket. The 3 will cut off the 1 flare screen for a possible open jump shoot. If the open lane passes are not there pass it to the 3 and the 4 pop out from out of bounce and run to the corner three point line. The 5 will stay in the low post block and receive the ball from the 3. Go to work and score.