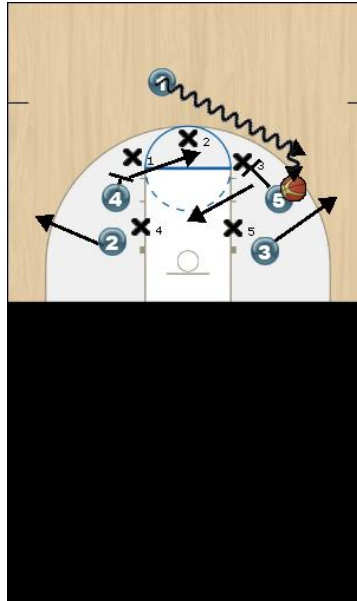




Box in 1

Initial Set



Box in 1 will work in a 3-2 defense and a 2-3. The 1 will dribble the ball at the top of the three point line. The 1 will choose which side he wants to go for the pick. In this play we have the 1 taking the pick of the 5. Once the pick is set the 2,3 will pop out. The 5 will cut to the basket and the 4 will pop out to the top of the key. The 1 will have three options to pass it to the 3 or 5 or shoot.