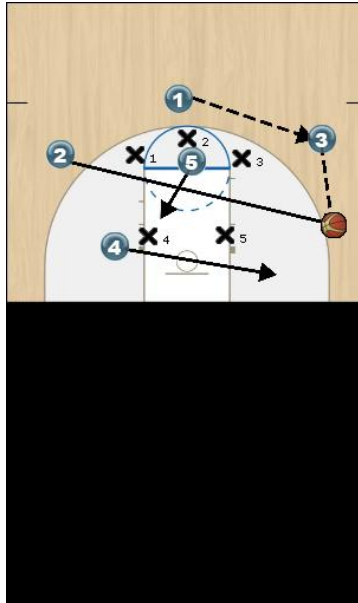




## BOX OFF 1

### Initial Set



In a 3-2 defense Box off 1. In this play the 2 will cut to the opposite side of the three point line. While the 2 is cutting the 1 will pass the ball to the 3 and 3 will pass the ball to the 2 the 2 have the option to set or pass it backdoor to 4 or in the lane to the 5. Remember you only have three seconds in the lane.